

ロボットの科学技術 (遠隔配信版)

追加資料 **3Dロボットシミュレータ
CoppeliaSim Edu (旧V-REP)のインストールについて**

担当：三上貞芳

研究棟607室, s_mikami@fun.ac.jp

授業サイト <http://hope.c.fun.ac.jp/>



Coppelia Sim: 3Dロボットシミュレータ (教育無償版を利用)

<https://www.coppeliarobotics.com/>



COPPELIA  **ROBOTICS**

Features Videos Downloads Resources Contact

V-REP was discontinued. Discover **CoppeliaSim**.



CoppeliaSim

from the creators of V-REP

Create. Compose. Simulate.
Any Robot.

The robot simulator CoppeliaSim, with integrated development environment, is based on a distributed control architecture: each object/model can be individually controlled via an embedded script, a plugin, a ROS or BlueZero node, a remote API client, or a custom solution. This makes CoppeliaSim very versatile and ideal for multi-robot applications. Controllers can be written in C/C++, Python, Java, Lua, Matlab or Octave.

CoppeliaSim is used for fast algorithm development, factory automation simulations, fast prototyping and verification, robotics related education, remote monitoring, safety double-checking, as digital twin, and much more. You can find a feature overview [here](#).

The robot simulator CoppeliaSim, with integrated development environment, is based on a distributed control architecture: each object/model can be individually controlled via an embedded script, a plugin, a ROS or BlueZero node, a remote API client, or a custom solution. This makes CoppeliaSim very versatile and ideal for multi-robot applications. Controllers can be written in C/C++, Python, Java, Lua, Matlab or Octave.

CoppeliaSim is used for fast algorithm development, factory automation simulations, fast prototyping and verification, robotics related education, remote monitoring, safety double-checking, as digital twin, and much more. You can find a feature overview [here](#).

News

IREX (Tokyo, Dec. 18-22 2019)

Coppelia Robotics exhibited CoppeliaSim

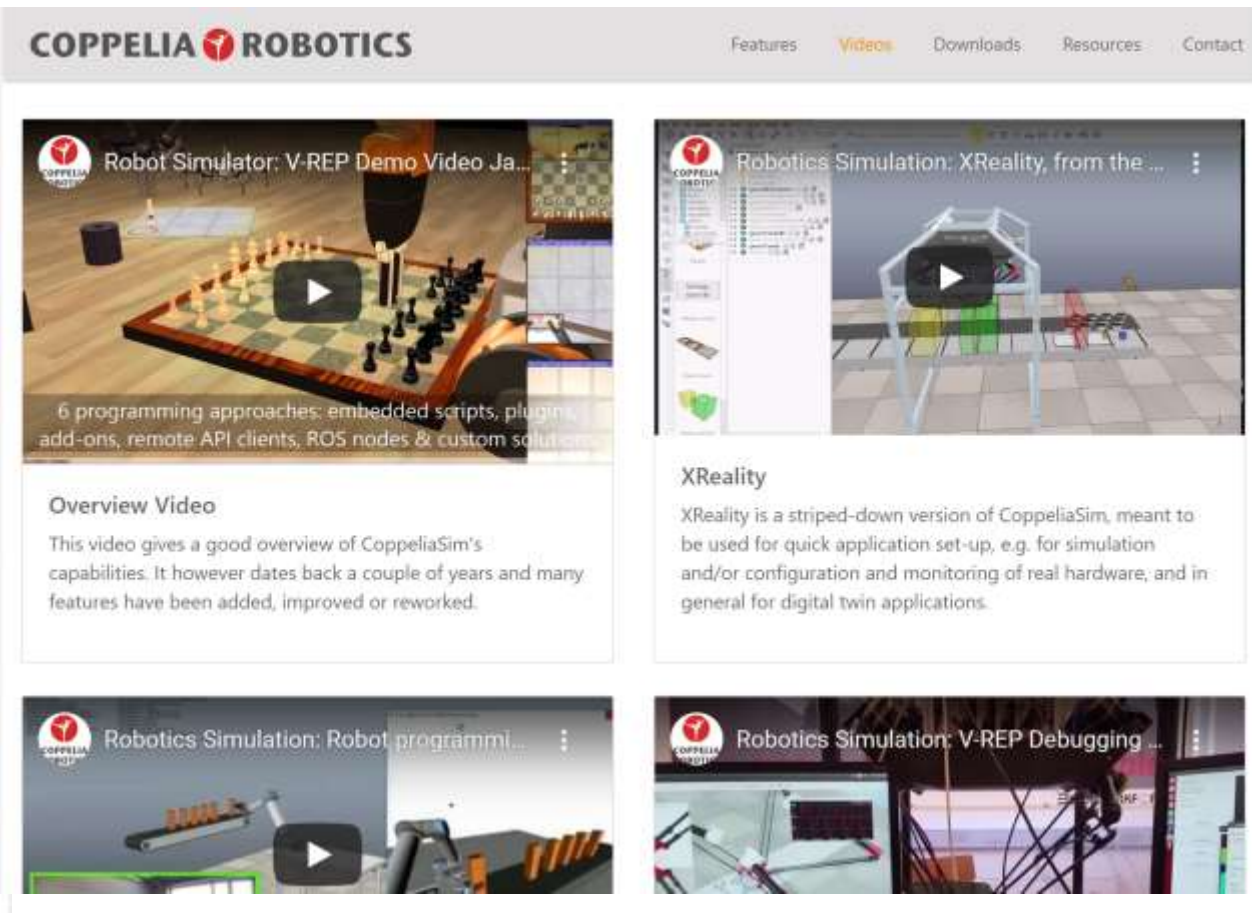
CoppeliaSim Release 4.0.0 is out (26/11/2019)


V-REP was discontinued. Discover **CoppeliaSim!**

-> [Change log here](#) <-

V-REP Release 3.6.2 is out (June 26th 2019)


-> [Change log here](#) <-



COPPELIA  **ROBOTICS**

Features **Videos** Downloads Resources Contact

Robot Simulator: V-REP Demo Video Ja...

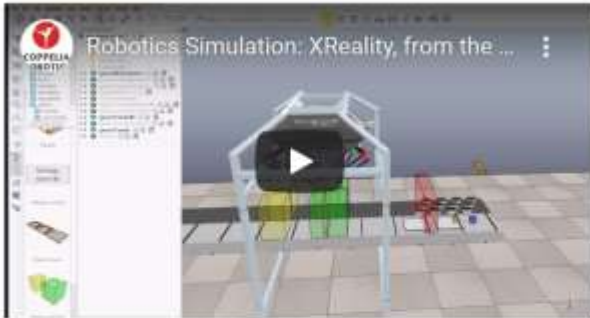


6 programming approaches: embedded scripts, plugins, add-ons, remote API clients, ROS nodes & custom solutions

Overview Video

This video gives a good overview of CoppeliaSim's capabilities. It however dates back a couple of years and many features have been added, improved or reworked.


Robotics Simulation: XReality, from the ...




XReality

XReality is a stripped-down version of CoppeliaSim, meant to be used for quick application set-up, e.g. for simulation and/or configuration and monitoring of real hardware, and in general for digital twin applications.

Robotics Simulation: Robot programmi...



Robotics Simulation: V-REP Debugging ...



V-REP was discontinued. Discover **CoppeliaSim**.

CoppeliaSim Player V4.0.0 rev4

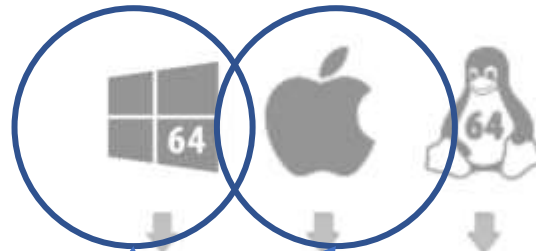
CoppeliaSim ^{player}



Player version. Limited editing capabilities. Free. May be freely distributed.

CoppeliaSim Edu V4.0.0 rev4

CoppeliaSim ^{edu}



Full-featured **educational** version. Free. [licensing conditions](#)

CoppeliaSim Pro V4.0.0 rev4

CoppeliaSim ^{pro}



Commercial version. [Contact us](#) for pricing and details. Reverts to evaluation mode without licens

自分のPCのOSに対応する
アイコンをクリックして
ダウンロード

<https://www.coppeliarobotics.com/downloads>

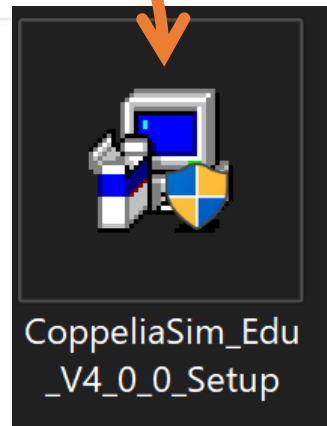


Windows Versions, CoppeliaSim V4.0.0 rev4

[CoppeliaSim Player, Binaries](#)[CoppeliaSim Player, Installer](#)[CoppeliaSim Edu, Binaries](#)[CoppeliaSim Edu, Installer](#)[CoppeliaSim Pro, Binaries](#)[CoppeliaSim Pro, Installer](#)

Windowsの場合は, Eduバージョンのインストーラをダウンロードして実行

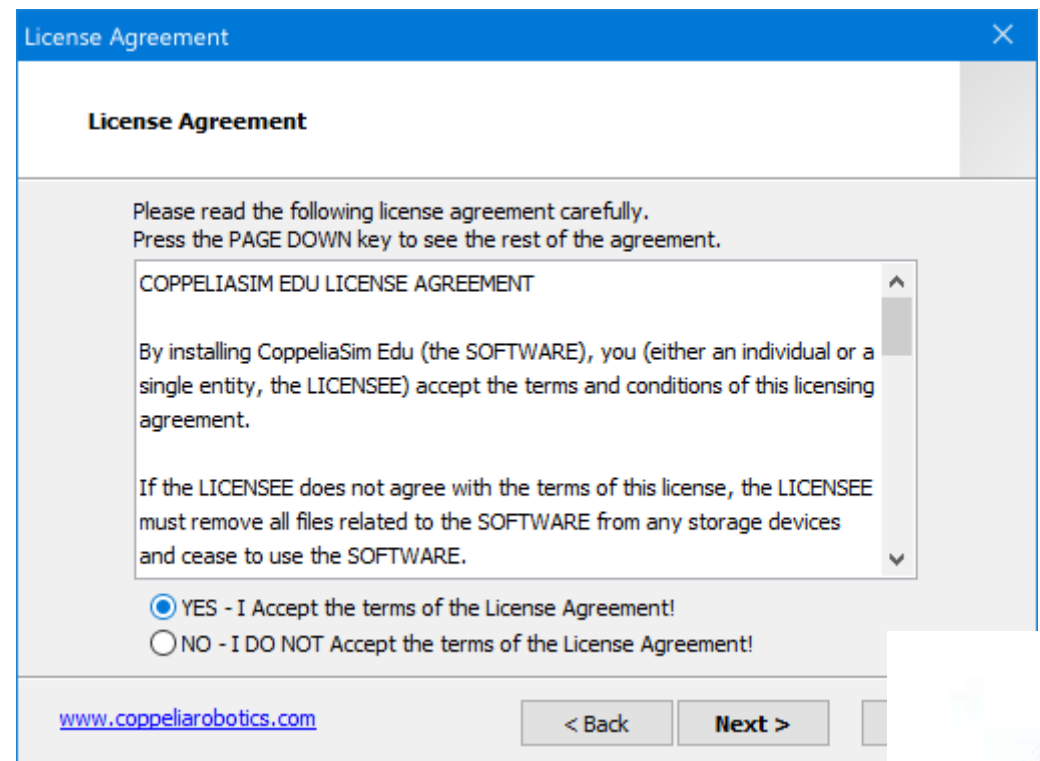
(Macの場合はダウンロードしたZIPファイルを解凍して利用してください)



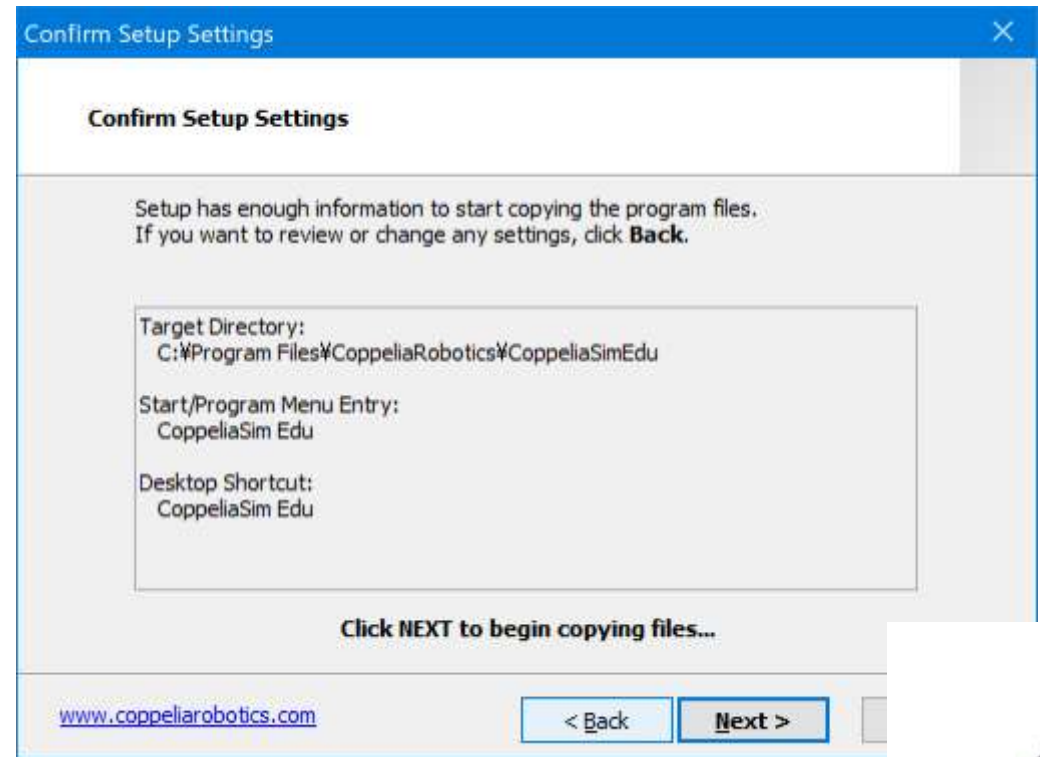
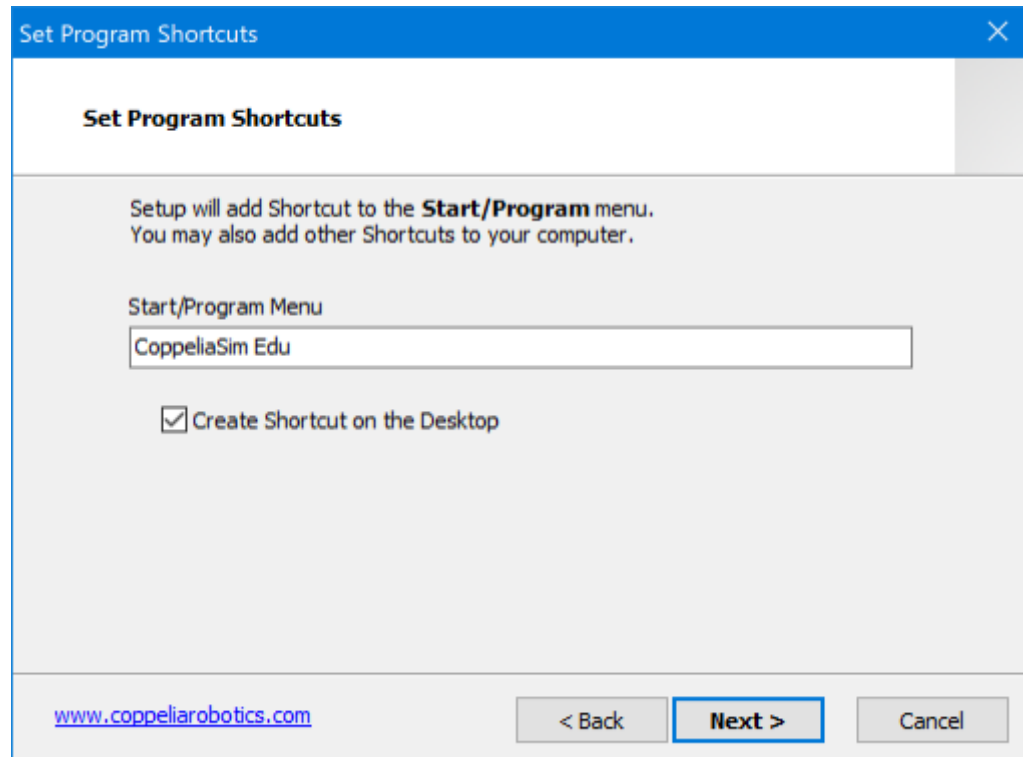
<https://www.coppeliarobotics.com/winVersions>



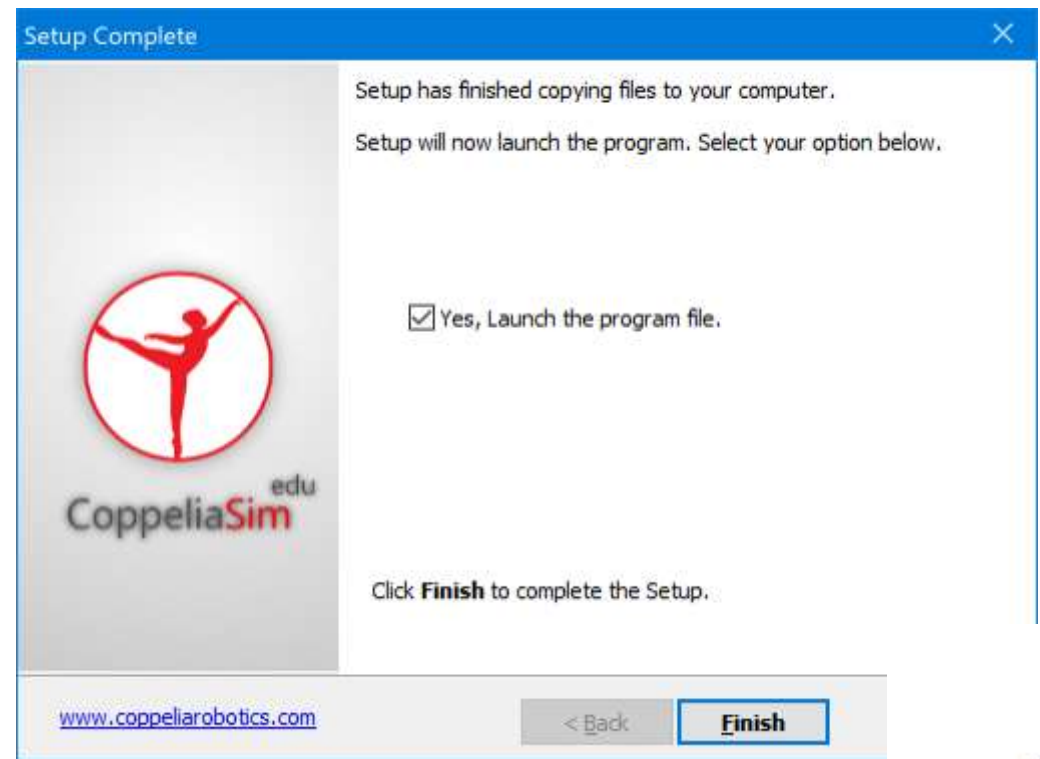
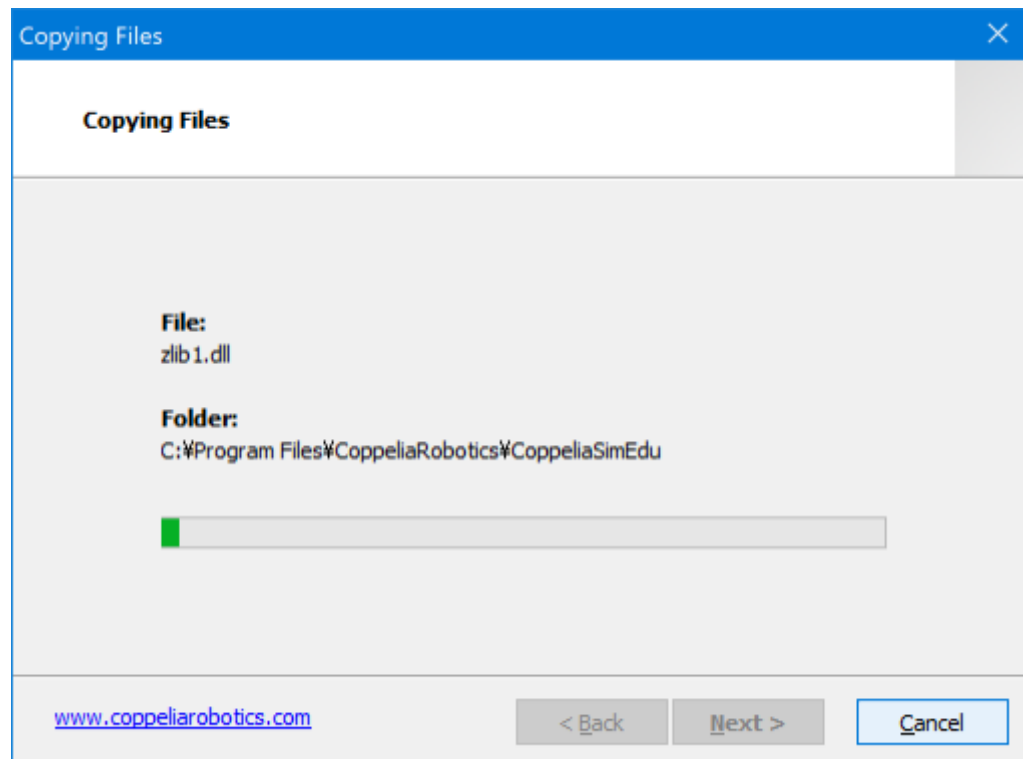
インストール手順1

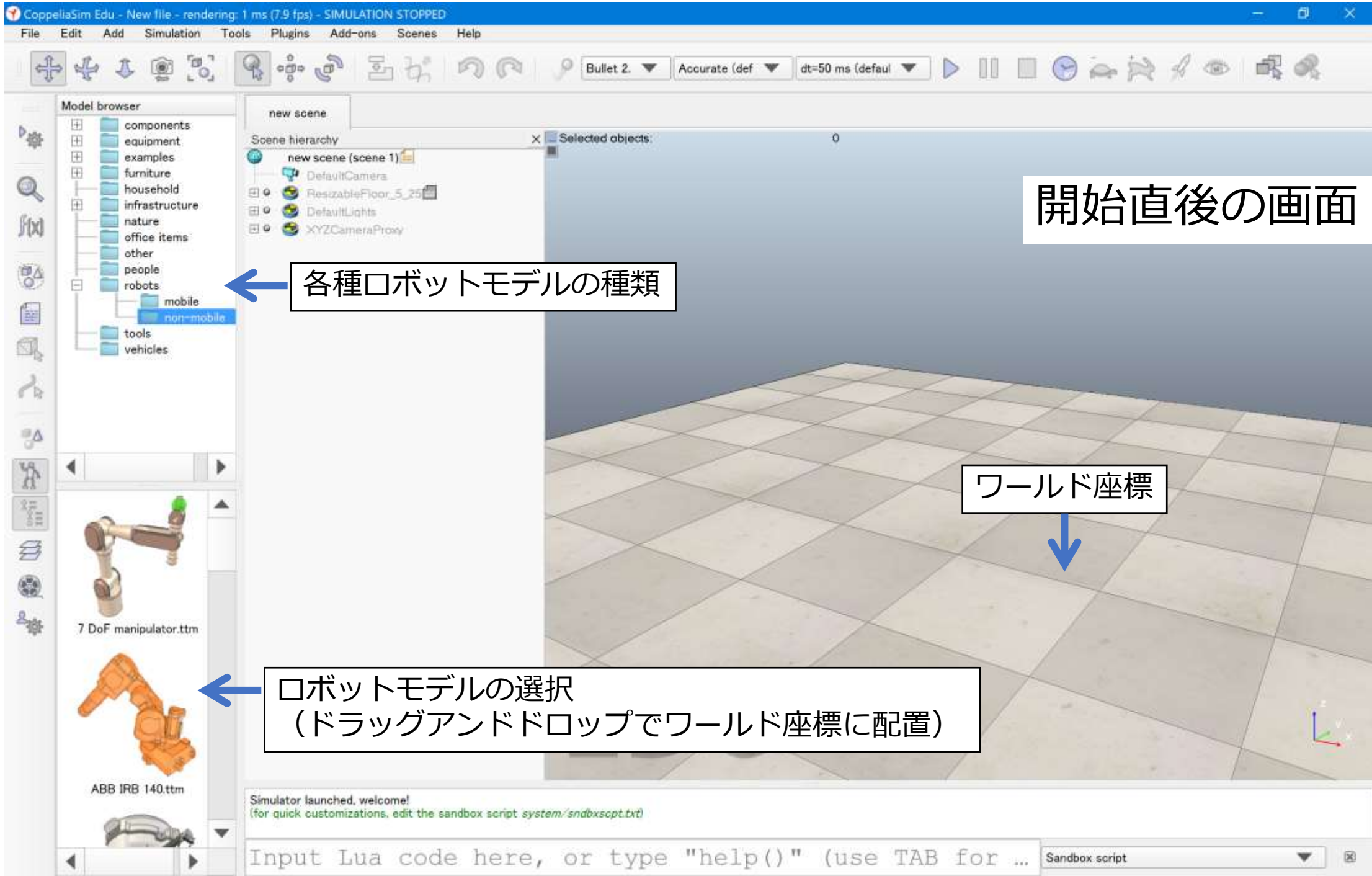


インストール手順2



インストール手順3



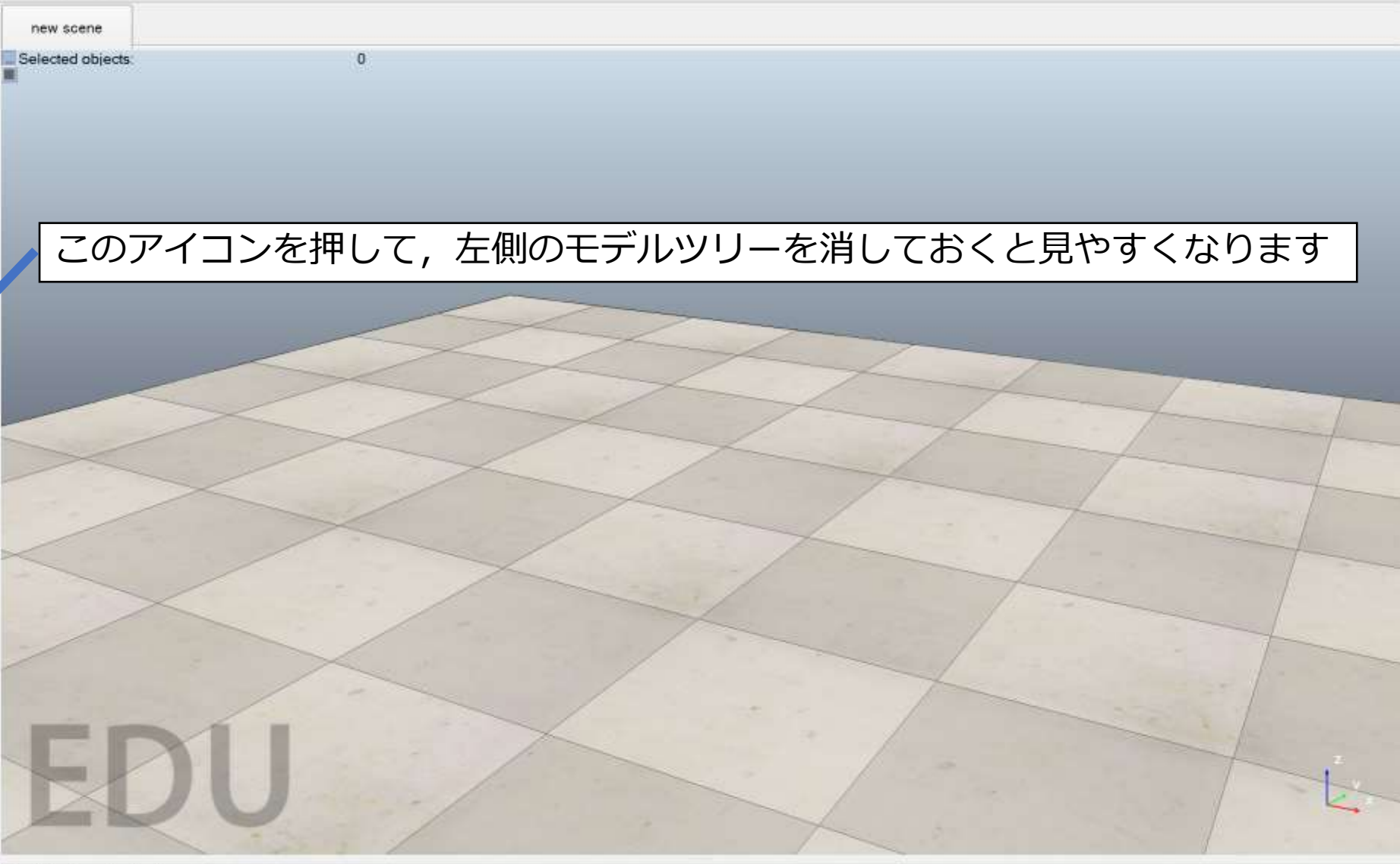


Model browser

- components
- equipment
- examples
- furniture
- household
- infrastructure
- nature
- office items
- other
- people
- robots
 - mobile
 - non-mobile
- tools
- vehicles

7 DoF manipulator.ttm

ABB IRB 140.ttm



このアイコンを押して、左側のモデルツリーを消しておくで見やすくなります

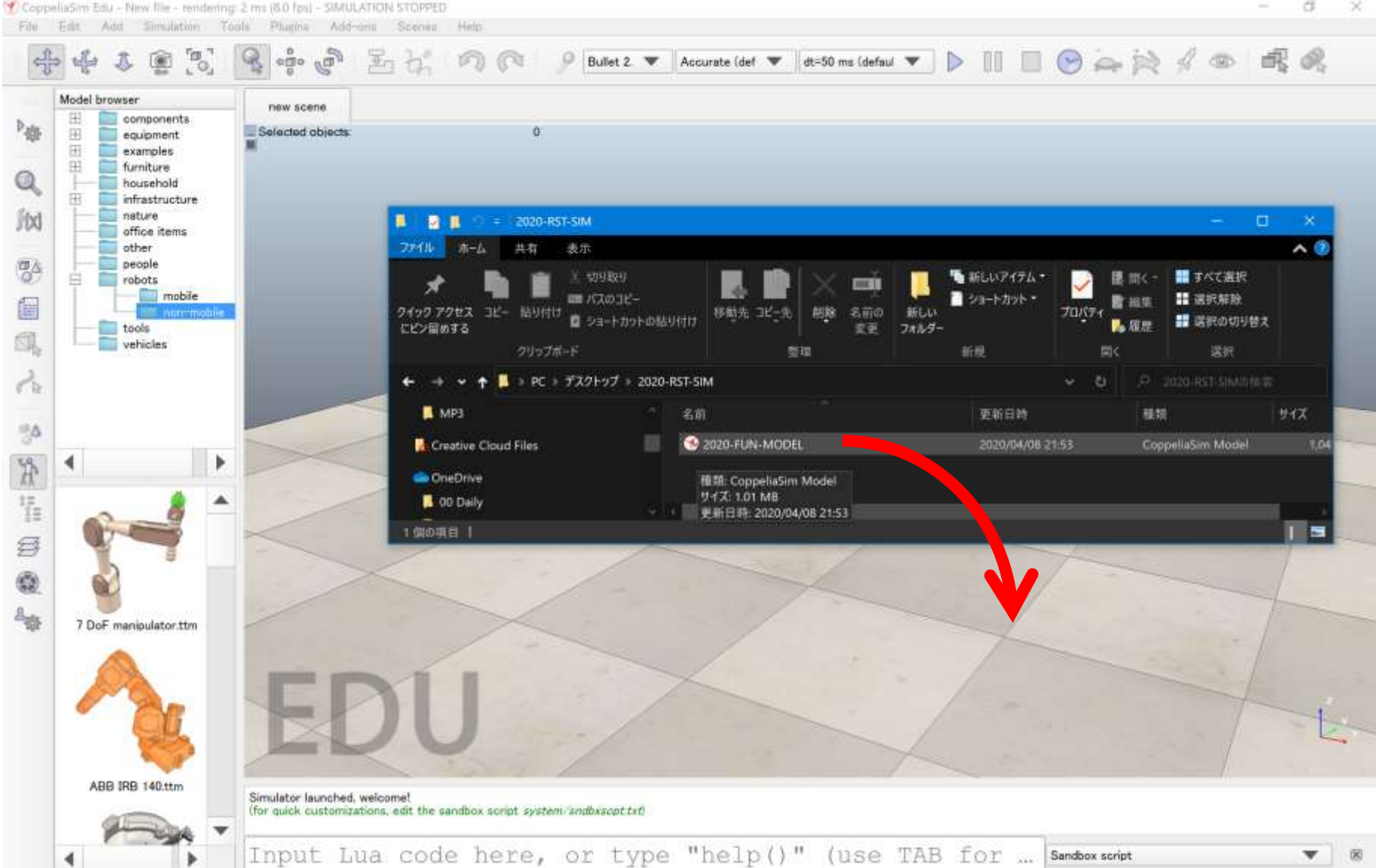


ロボットの科学技術のHOPEのページから モデルをダウンロードしてください

- 2020-FUN-MODEL.ttm というファイルです

名前	更新日時	種類	サイズ
 2020-FUN-MODEL	2020/04/08 21:53	CoppeliaSim Model	1,041 KB





CoppeliaSimを起動して、このファイルをCoppeliaSimの床画面にドラッグアンドドロップしてください
Windowsでは、2020-FUN-MODELのダウンロードファイルをダブルクリックしても開けます





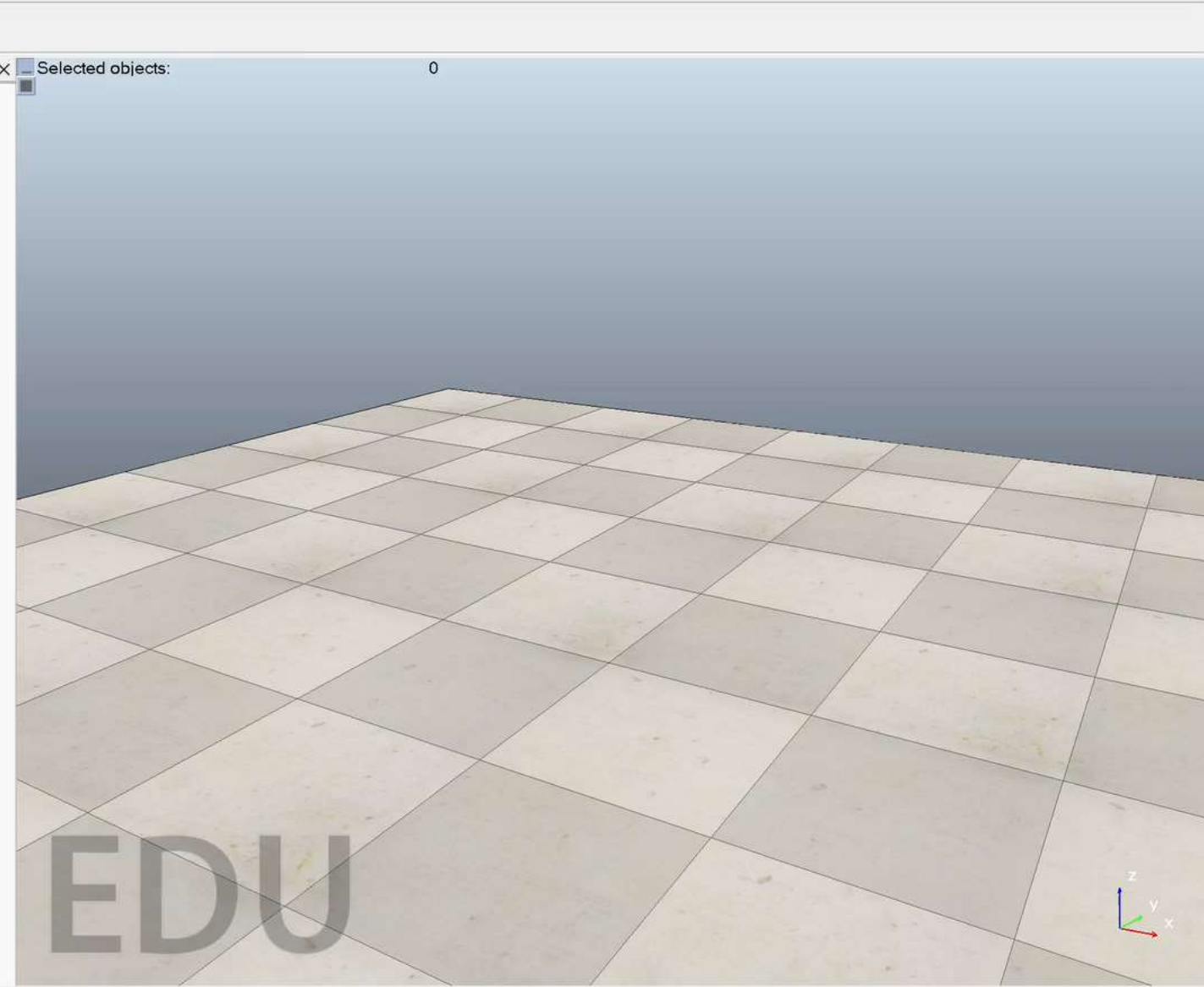
- Model browser
- components
 - equipment
 - examples
 - furniture
 - household
 - infrastructure
 - nature
 - office items
 - other
 - people
 - robots
 - mobile
 - non-mobile
 - tools
 - vehicles

new scene

Scene hierarchy

- new scene (scene 1)
 - DefaultCamera
 - ResizableFloor_5_25
 - DefaultLights
 - XYZCameraProxy

Selected objects: 0



Simulator launched, welcome!
 (for quick customizations, edit the sandbox script `system/sndbxscpt.txt`)

Input Lua code here, or type "help()" (use TAB for ...

Sandbox script

終了時には変更をセーブしないならNo

